

ENVISION ENDLESS POSSIBILITIES WITH WORKPLACE AI

Canon

Delighting You Always



Achieve **workplace efficiency** with business intelligence that **enhances security & safety** through **automation**.



Enhanced Safety & Security



Smart Automation



Optimising Resources

SMART TECH 

Introducing Workplace AI

An Edge AI Box ensures a **more secure, efficient and safe workspace**. This device runs **multiple video data analytics** while integrating with **existing surveillance cameras and IoT devices**.



ADVANCED AI ALGORITHM

Identifies and adapts to **different settings** through continuous learning for **greater accuracy and reliability**.



SMART AUTOMATION

Maximises productivity by **ensuring prompt responses** and **reducing potential threats** for a **smoother streamline of operations**.



FLEXIBLE & FUTURE-PROOF OPEN PLATFORM

Seamlessly integrate with **existing systems** while adapting to any **future technological advancements**.

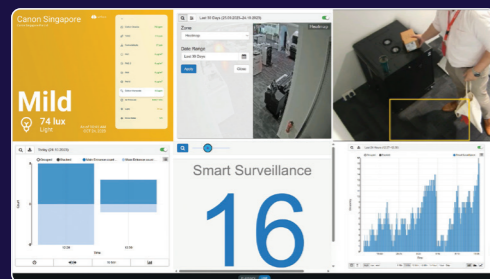


REAL-TIME ALERTS

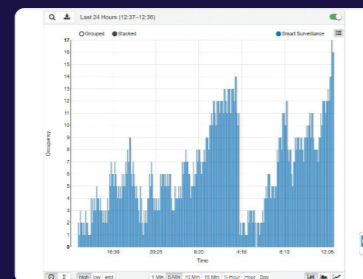
Receive instant notifications on the system's dashboard for **any unauthorisations** and **safety risks**, along with any **valuable business insights**.

Versatile Dashboard

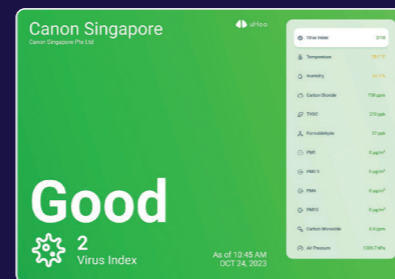
- 24/7 MONITORING
- CUSTOMISABLE REPORTS
- REAL-TIME DATA



Single pane of glass for all statistics and alerts



Graphical presentation of data for easy understanding



Real-time business intelligence from video and sensor data sources

Workplace AI's Three Main Pillars



ENHANCED SAFETY & SECURITY

Real-time alerts on violations and obstructions for safety.



SMART AUTOMATION

Streamline operations efficiently and automatically trigger alarms for any potential security threats.



OPTIMISING RESOURCES

Manage organisational assets by understanding consumers better, and allocating the right resources and manpower.

Engage With Boundless Potential Across Diverse Verticals

Office



Receive Real-Time Alerts

- Ensure access to sensitive areas is **limited to authorised personnel only**.
- Enhanced surveillance **monitors for security threats**, such as blacklisted or loitering individuals.
- Be alerted to bulky items **obstructing emergency exits or walkways**.



Maintain a Spotless Workplace

- Maintain clean surroundings to ensure **employees' good health & well-being**.
- Following a clean desk policy **keeps sensitive information safe & secured**.

Education



Assure Campus Safety

- Secure campus safety with **real-time surveillance and automated alerts** to minimise potential threats.
- Supervise **compliance with safety protocols in lab lessons**, by detecting if attire like **personal protective equipment (PPE)** is worn.
- Be alerted to bulky items **obstructing emergency exits or walkways**.



Better Campus Management

- Offers smoother workflows through **automated operations** that greatly supports **facility management**, including **man-less libraries**.
- Receive **automated alerts** for any **potential threats** within zones.

Retail



Smarter Spaces, Better Service

- Improve customer experience by **identifying customer behaviour** and activities with **heatmaps**.
- **Understand footfall in retail spaces** to **identify traffic hot spots** with people counting.
- **Enhance efficiency** by **minimising long queues** with manpower deployment.

Healthcare



Real-Time Alerts on Hospital Grounds

- Monitor patients **susceptible to falls and unsafe movements**, particularly those who are prone to **leaving their wards unassisted**.
- **Protect patients' privacy** in sensitive areas with Privacy Masking, and **control access to critical zones** like operating rooms and medication usage by **employing facial recognition**.
- Be alerted to **obstructions along emergency walkways**, such as cleaning carts.



Support Recovery Process

- Monitor the air quality to ensure the **good health & well-being of staff and patients**.



Alleviate Caregiver Load

- Ensure **prompt responses from caregivers** with **automated alarms** that alert about any **unauthorised patient movements**.

WORK WITH CANON

At Canon, we recognise that every organization or business is different. That is why our consultants work so closely with you to first understand your needs before providing customised solutions to achieve your desired business and operational outcomes.



Kick-start your transformation journey by booking a session with our Solutions Consultants today!



SCAN ME

Canon

Delighting You Always

Distributed by
Canon Singapore Pte. Ltd.
SOUTH & SOUTHEAST ASIA
REGIONAL HEADQUARTERS

1 Fusionopolis Place
#14-10 Galaxis
Singapore 138522

<http://asia.canon>

DISCLAIMER

Comprises various solutions distributed by Canon Singapore Pte. Ltd. and its subsidiaries. This document is for general information only and contents are subject to change without notice. Errors and omissions excepted. Options, name and availability may vary by regions. Nothing in this document should be construed as a warranty. We expressly disclaim any liability or contractual obligations in connection with this document. Trademarks belong to their respective owners.