



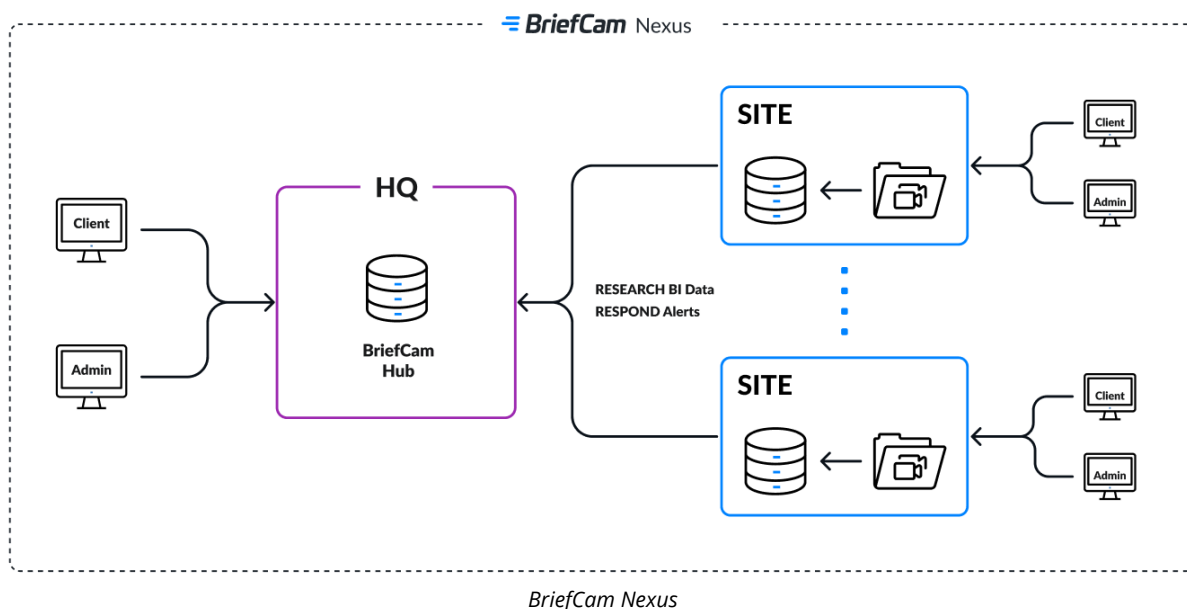
BRIEFCAM NEXUS

DATASHEET

BriefCam

The BriefCam® Nexus solution empowers communities and enterprises to translate video into impact. Leveraging their existing video surveillance investments, organizations with multiple locations or branches can make video searchable, actionable, and quantifiable to drive proactive and informed decision-making for both business intelligence and security use cases.

BriefCam Nexus is a multi-site architecture comprised of a centralized BriefCam Hub and Sites – standalone analytics implementations for each location or branch. Each Site is capable of processing local video in real-time or on-demand for video data search, alerting, and visualization through the REVIEW, RESPOND, and RESEARCH modules. The BriefCam Hub aggregates RESPOND alerts and RESEARCH metadata generated from each Site for real-time monitoring and cross-site KPI tracking through centralized RESEARCH dashboards.



CENTRALIZED ANALYTICS, MANAGEMENT, & ALERTS:

Collect and aggregate real-time alerts from all locations and visualize business intelligence from multiple sites in centralized dashboards. Easily register new Sites directly within the Hub platform.

OPTIMIZED HARDWARE FOR STREAMLINED SITES:

Seamlessly and confidently implement Site analytics for new locations, connecting to new or existing infrastructures with BriefCam in a Box hardware offerings.

UNMATCHED ACCURACY: Market leading accuracy for detection and classification across object classes, attributes, behaviors, as well as appearance similarity and face and license plate recognition.

SUPERIOR PERFORMANCE: Increase real-time performance, precision, and speed with AI-industry standard, Linux or Windows-based processing to effectively support both on-demand and real-time analytics for full camera coverage.

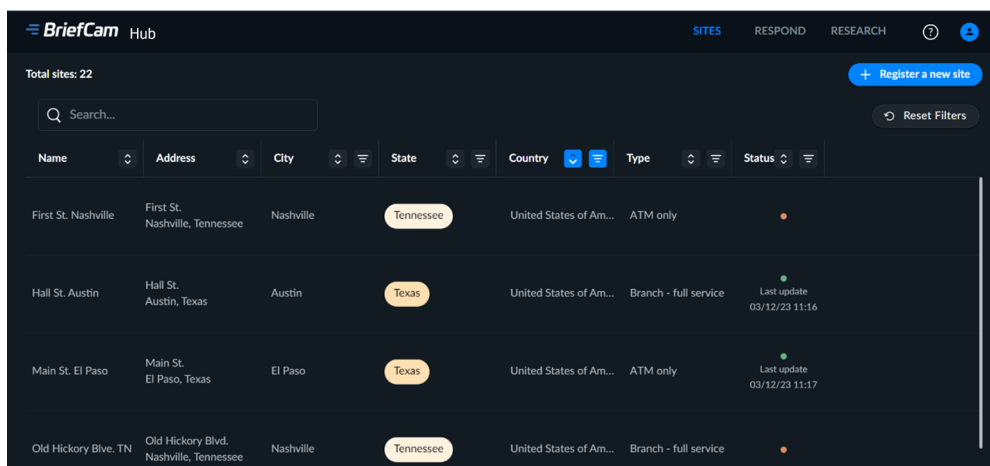
ELEVATED CUSTOMER EXPERIENCE: Dedicated consultancy, implementation, and support to ensure customers enjoy the quickest time to value, lowest total cost of ownership, and impactful analytics applications to maximize the investment in video.

SITES

CENTRALLY MANAGE & MONITOR SITE ANALYTICS

Within the Hub, the SITES tab empowers users to seamlessly manage, access, and add Sites within their network, including:

- Search for Sites by name, address, state, city, country, type, or status and visit a Site as a virtual, on-location user to see all relevant cases.
- Monitor Hub and Site connection status using a health monitoring indicator.
- Access the Hub's RESPOND and RESEARCH modules, which filter to Site-specific rules and alerts and business intelligence dashboards.



Name	Address	City	State	Country	Type	Status
First St. Nashville	First St. Nashville, Tennessee	Nashville	Tennessee	United States of Am...	ATM only	
Hall St. Austin	Hall St. Austin, Texas	Austin	Texas	United States of Am...	Branch - full service	Last update 03/12/23 11:16
Main St. El Paso	Main St. El Paso, Texas	El Paso	Texas	United States of Am...	ATM only	Last update 03/12/23 11:17
Old Hickory Blvd. TN	Old Hickory Blvd. Nashville, Tennessee	Nashville	Tennessee	United States of Am...	Branch - full service	

BriefCam Hub: SITES Module

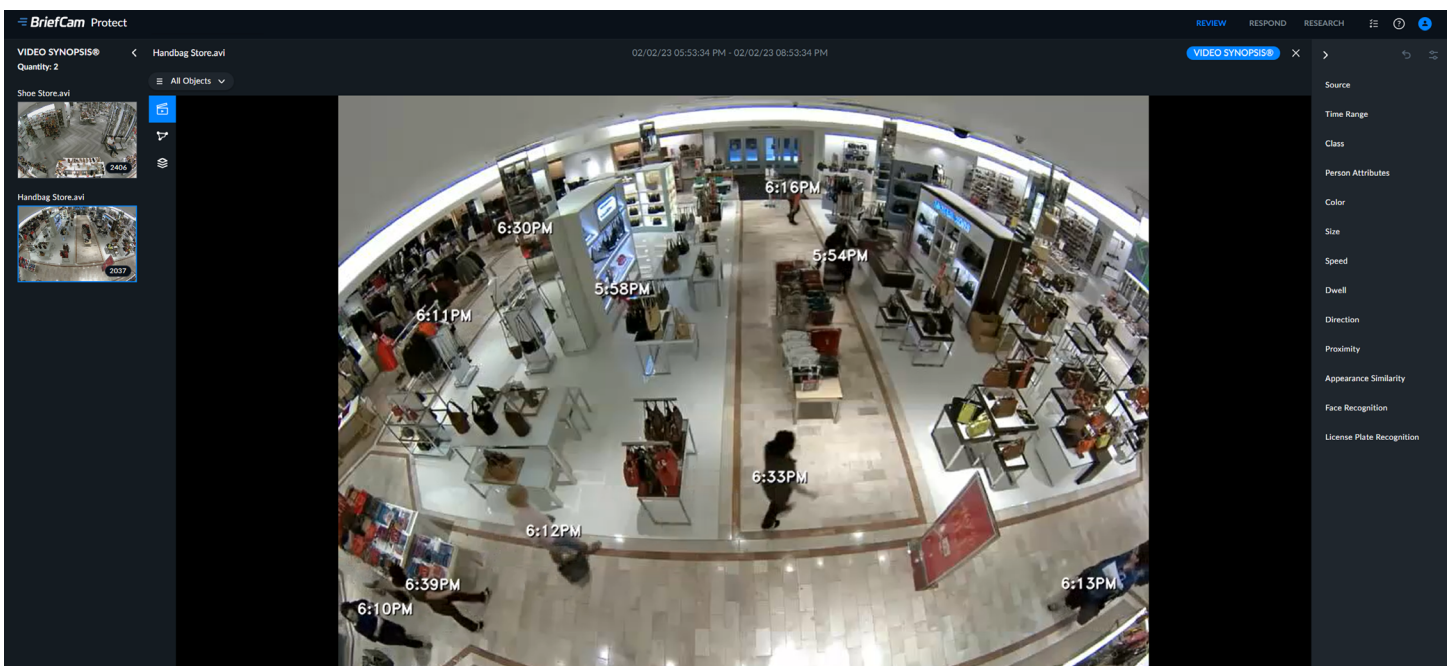
REVIEW

ACCELERATE INVESTIGATIONS

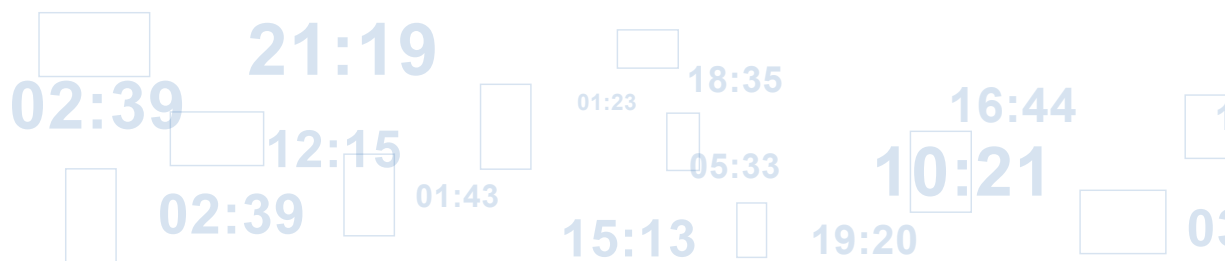
By leveraging REVIEW at each individual Site, users can pinpoint objects and events of interest to advance investigations and powerfully accelerate time to target at their location. This solution supports effective case management, enabling investigators to organize video assets, bookmark objects of interest, summarize case findings, and export reports while dynamically collaborating on cases between Site users. Hub users can open each individual site and access all available cases from the central location.

REVIEW empowers operators to review hours of video in minutes and refine search results through filter tolerance as well as density, speed, direction, and sort controls. REVIEW enables:

- Cross-camera video search and filtering based on an ever-expanding set of object classes and attributes.
- Visual layers to accurately portray activity, dwell time, common paths, and background changes as easily readable heatmaps for increased scene understanding.
- Dramatically shorter video segmentation with BriefCam's patented VIDEO SYNOPSIS® technology that fully preserves the viewer's ability to analyze a scene by simultaneously presenting objects that have appeared at different times within the video.



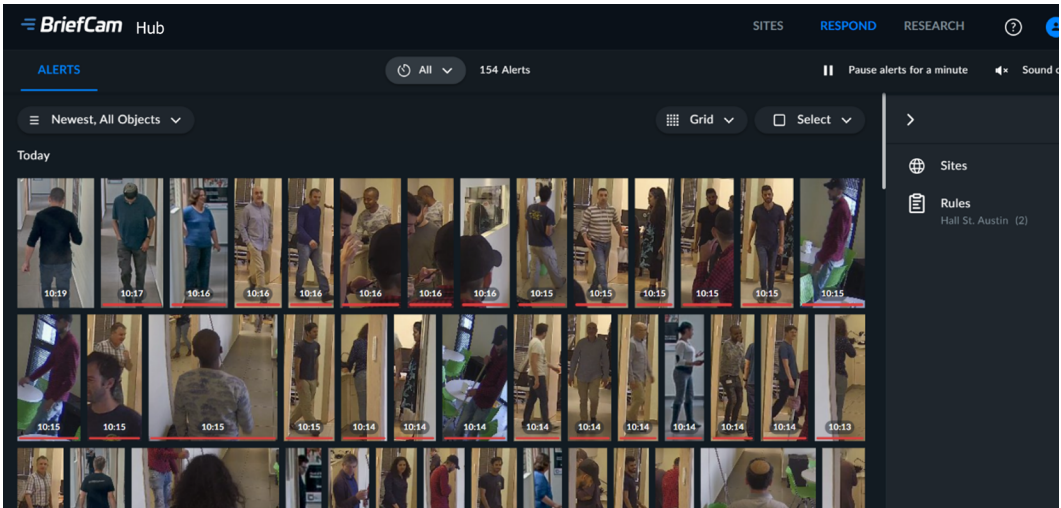
BriefCam Site: REVIEW Module



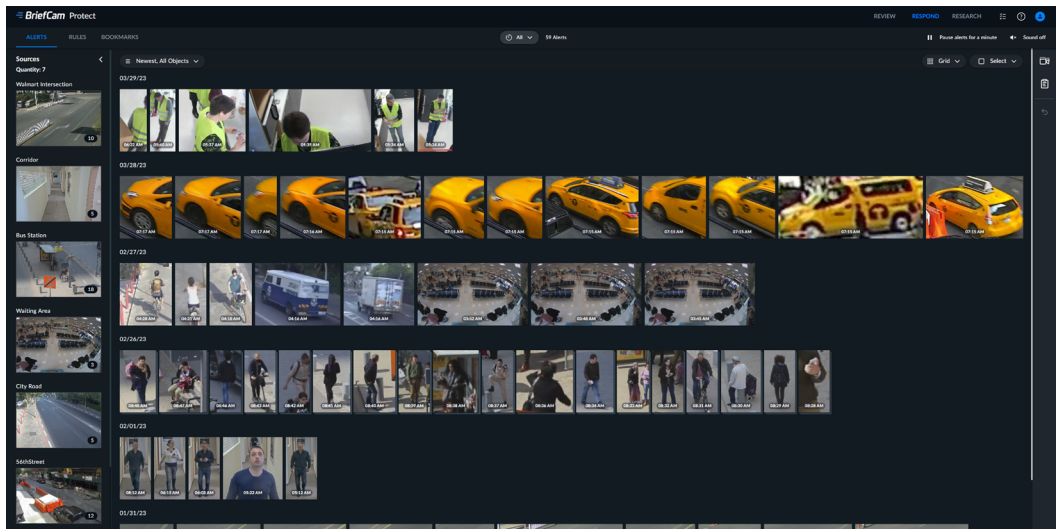
RESPOND

ATTAIN SITUATIONAL AWARENESS

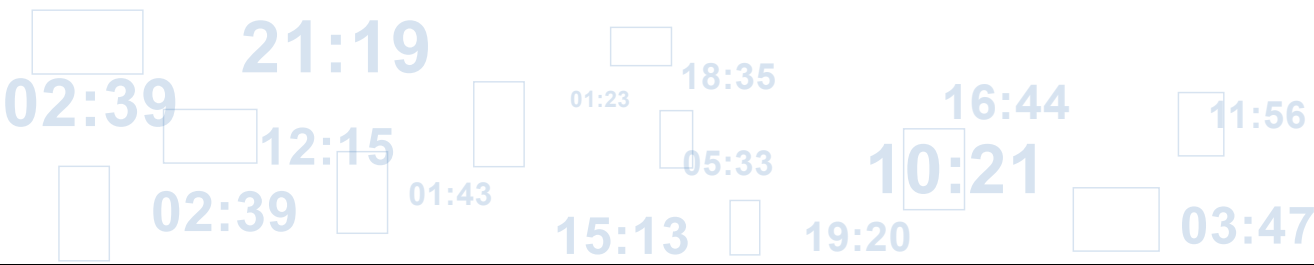
RESPOND empowers users to increase situational awareness and deliver critical, time-sensitive intelligence by triggering real-time, rule-based alerts at local Sites based on complex object classification and filter recognition capabilities. At the Hub, users can view alerts at individual Sites or centralize alerting monitoring from all Sites, aggregating each Site's real-time alerts with timestamps adjusted according to time zone. RESPOND also enables Site and Hub users to track events as they unfold, proactively protect people and property, and increase visitor and customer engagement. BriefCam accelerates responsiveness and real-time decision-making while effectively balancing sensitivity, accuracy, and efficiency with alerting rule configurations.



BriefCam Hub: RESPOND Module



BriefCam Site: RESPOND Module

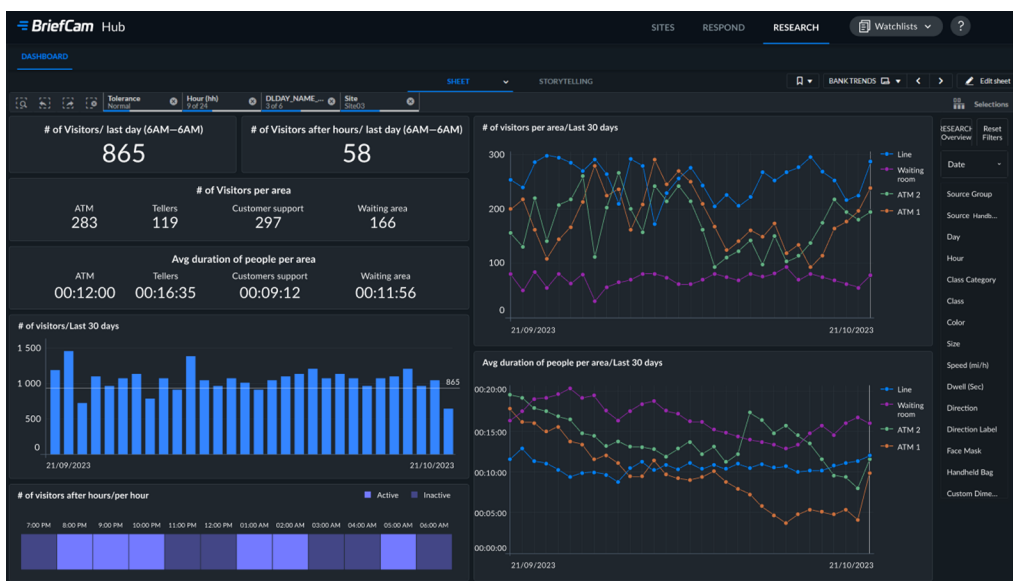


RESEARCH

DERIVE OPERATIONAL & BUSINESS INTELLIGENCE

Uncover patterns, drive strategic decision-making, and optimize operations and business practices by aggregating video data in a fully integrated, highly customizable business intelligence platform. RESEARCH visualizes object movement, demographic segmentations, behavior trending, hotspots, and object interactions into interactive, intuitive, and easy to use dashboards for data analysis.

BriefCam Hub users can access RESEARCH operational intelligence data for individual Sites and aggregate and compare data across all or multiple Sites in the Hub. Hub users can also use RESEARCH to answer critical operational and business questions and drive intelligent planning, decision-making, and KPIs by aggregating cross-Site intelligence about visitor demographics, footfall, and navigation trends, as well as unique, return, and bounced traffic. Drive revenue growth and maximize cross-business visibility by seamlessly combining centralized RESEARCH data from multiple Sites with other data reporting tools, such as POS or inventory analysis.



BriefCam Hub: RESEARCH Module



BriefCam Site: RESEARCH Module

ADMINISTRATION

EASY TO MANAGE AND MONITOR

CENTRALIZED ADMINISTRATION: View and activate cameras, configure hosts, GPUs, and services from a single web interface at each Site. Hub users can register new Sites within the Hub interface.

FLEXIBLE SCHEDULING: Schedule continuous, one-time, daily, or weekly automatic video processing for each VMS video source across all platform modules.

GDPR COMPLIANCE: Easily delete or export personally identifiable data to enable GDPR compliance.

CROSS-PLATFORM VIDEO ANALYTIC CAPABILITIES			
FEATURE	REVIEW Search	RESPOND Alert	RESEARCH Quantify
SOURCE Based on specific cameras or files	✓	✓	✓
TIME RANGE Based on specific time ranges	✓	✓	✓
CLASS Based on People (Man, Woman, Child), Two-Wheeled Vehicles (Bicycles, Motorcycles), Other Vehicles (Car, Pickup, Van, Truck, Bus, Train, Airplane, Boat), Illumination Changes, and Animals	✓	✓	✓
CUSTOM CLASSIFID Define, train on-site, and leverage custom classes for uniformed workers and 4-wheel vehicles. Available only with the Linux-based engine	✓	✓	✓
PERSON ATTRIBUTES Based on person characteristics, including Lower and Upper Wear (by color), Hats, Face Masks, and Bags	✓	✓	✓
COLOR Based on any combination of object color, including Brown, Red, Orange, Yellow, Green, Lime, Cyan, Blue, Purple, Pink, White, Grey, and Black	✓	✓	✓
VIDEO SYNOPSIS Simultaneously view objects that have appeared at different times in a video, or from smart alerts for accelerated video review	✓	✓	
FAST TRACK Quickly find objects across surrounding cameras based on geolocations defined in the integrated VMS. Available for Genetec and Milestone	✓		
CASE MANAGEMENT Organize all video assets of an investigation in a single container, bookmark objects of interest, and export case findings reports to support collaboration	✓		
APPEARANCE SIMILARITY Identify people and vehicles with similar attributes	✓		

FEATURE	REVIEW Search	RESPOND Alert	RESEARCH Quantify
FACE RECOGNITION Based on images extracted from existing video or photo uploads, conduct “in the wild” face matching for persons included or excluded on watchlists. BriefCam offers versions with Face Recognition completely deactivated and excluded from the user interface.	✓	✓	✓
LICENSE PLATE RECOGNITION For in “in the wild” surveillance scenarios, recognize license plates based on watchlists for vehicle behavior analysis and traffic optimization	✓	✓	✓
VEHICLE MAKE AND MODEL RECOGNITION Identify vehicles by brand and type.	✓	✓	✓
PROXIMITY IDENTIFICATION Detect the distance between individuals over time and location for measuring compliance with physical distancing mandates, enabling contact tracing, and advancing investigations	✓	✓	✓
FACE MASK DETECTION Detect and identify face mask wearing and lack thereof for measuring compliance with public health mandates and safety codes	✓	✓	✓
PEOPLE COUNTING Count the number of people in a pre-defined area or who travelled in a certain direction, track queues and crowd formations, and measure occupancy to optimize space utilization and pedestrian traffic flows	✓	✓	✓
AIRPLANE COUNTING Monitor the increase or decrease of airplanes in a pre-defined range of view or area. Available only with the Linux-based engine		✓	✓
GROUP DETECTION Receive alerts when a group of a pre-defined number forms in a certain area for a certain amount of time. Available only with the Linux-based engine		✓	
VISUAL LAYERS Create visual analytics and derive insights about activity, dwell time, common paths, and background changes	✓		✓
DIRECTION Based on the direction detected in the video	✓	✓	✓
SIZE Based on object’s actual calculated size	✓	✓	✓
PATH Identify objects traveling along one or more user-defined paths	✓	✓	✓
AREA Identify objects included or excluded within one or more user-defined 3- or 4-sided polygon areas	✓	✓	✓
SPEED Based on object’s actual calculated speed	✓	✓	✓
DWELL Based on object dwelling for pre-set time periods within a scene	✓	✓	✓
LINE CROSSING Detect demarcation crossings in a predefined direction	✓	✓	✓

TECHNICAL SPECIFICATIONS

RECOMMENDED VIDEO STREAM RESOLUTION	Minimum CIF (352 x 240), Maximum 4K (3840 X 2160)
RECOMMENDED FRAME RATE (FPS)	8-30 frames per second
SUPPORTED VIDEO FILE FORMATS	.264, .3GP, .ASF, .AVI, .DAV, .DIVX, .DVR*, .FLV, .G64, .G64X, .GE5, .MKV, .MOV, .MP3, .MP4, .RAW, .RT4, .TS, .WMV, .XBA (single & multi-stream)
SUPPORTED CODECS	H.264, H.265/HEVC, MPEG-4, H.263 (H.265 is supported for selected VMSs and cameras)
SUPPORTED VMS PLATFORMS	American Dynamics, Arcanes Technology, Avigilon, Axis, Bosch, CASD, Dallmeier, Digifort, Digital Watchdog, Exacq, FLIR, Genetec, Geutebruck, Hanwha, Hikvision, IndigoVision, Intellicene, IPConfigure, ISS, LenelS2, March Networks, Milestone, Network Optix, Panasonic i- PRO, Pelco, Qognify, Salient, Surveillus*, Synectics*, Teleste, Verint * Plugins created by the VMS partner
SUPPORTED CAMERA TYPES	Fixed Cameras
FACE RECOGNITION	Minimum Face Size: 40x40 pixels across the person's face, 20 pixels between the eyes, or 400 pixels per meter
SUPPORTED LANGUAGES	Arabic, Brazilian Portuguese, Bulgarian (not including RESEARCH), Chinese Simplified, Chinese Traditional, Danish, Dutch, English, Finnish, French, German, Hebrew, Italian, Japanese, Korean, Latin Spanish, Russian, Thai, Turkish, Ukrainian, Vietnamese
SUPPORTED BROWSERS	Google Chrome Desktop and Mozilla Firefox

02:39 12:15 01:23 16:44
02:39 01:43 05:33 10:21
15:13 19:20

ABOUT BRIEFCAM

BriefCam® is the leading provider of video analytics software that enables people, companies, and communities to unlock the value of video surveillance content. Delivering accurate, flexible, and comprehensive solutions, BriefCam's video analytics platform provides valuable insights for accelerating investigations, increasing situational awareness, and enhancing operational intelligence. VIDEO SYNOPSIS® technology is a registered trademark of BriefCam, Ltd. For more information about BriefCam's video content analytics solutions, visit www.briefcam.com.